



FEATURES

- **10,000 lb. (4536 kg) capacity**
40 ft. (12.1 m) reach
56 ft. (17.1 m) of lift
- Smooth four section roller boom
- One high quality joy stick controller handles all boom and fork functions
- Self-leveling forks with no separate slave cylinder
- Fast, responsive high angle steering
- Pressure compensated on-demand hydraulics, 10 micron filtration
- Motion control valves in the lift, boom, fork tilt, sway and stabilizer circuits
- Turbo-charged diesel engine, 3-speed Powershift transmission
- 4-wheel drive, 4-wheel (2-wheel & oblique) power steering
- Oil cooled totally enclosed service brakes
- Planetary axles front and rear, 1400 x 24 12-ply tires
- Twin pivot mounted stabilizers
- Front axle differential lock, rear axle lock up
- Removable gauge panel
- SAE O-ring or JIC hydraulic connections

**simple, available and
cost effective™**

TEREX TH1056C SPECIFICATIONS

WEIGHTS with Boom retracted and down

On Front Axle	14,940 lbs. (6775 kg)
On Rear Axle	16,260 lbs. (7374 kg)
TOTAL	31,200 lbs. (14 149 kg)

DIMENSIONS with Boom retracted and down

Width OVERALL	8' 6" (2.54 m)
Height OVERALL	9' 9" (2.97 m)
Length OVERALL	27' (8.23 m)
Wheel Base	11' 3" (3.43 m)
Ground Clearance	1' 7" (.48 m)
Turning Radius (outside tire)	15' 2" (4.62 m)

ENGINE	Make	John Deere Turbo-charged
	Model	4045T
	Power	125 HP (93.3 kW)
	RPM	2400
	Fuel Tank Capacity	30 Gals. (113.6 L)

TRANSMISSION	Powershift/Converter	3 Speed
---------------------	----------------------	---------

BRAKES - Parking	Type	Spring Applied/Hyd. Release
	Location	Internal

BRAKES - Service	Type	Enclosed, Hydraulic, Multiplate, Oil Cooled
	Location	Internal

AXLES	Heavy Duty Steering Planetaries
--------------	---------------------------------

WHEELS AND TIRES (Interchangeable)	Wheels	Heavy Duty Drop Center
	Tires - Calcium Chloride Solution Filled	1400 x 24 - 12 Ply

TRAVEL SPEEDS - Forward and Reverse	First	3.3 MPH (5.3 km/hr)
	Second	6.5 MPH (10.5 km/hr)
	Third	18.5 MPH (29.8 km/hr)

STEERING	Power Hydraulic Modes	Orbitrol 2 Wheel, 4 Wheel & Oblique
-----------------	-----------------------	--

HYDRAULICS	Single Pump (unloaded during engine start)	Axial Piston
	Type	Flow on Demand
	Filtration	10 Micron
	Reservoir Capacity	48 Gal. (181.7 L)

SWAY CONTROL - Frame Leveling	Type	Twin, Circuit Isolated, Cylinders
	Range	10° Either Side of Center

EXTENSION BOOM	4 Section Roller
-----------------------	------------------

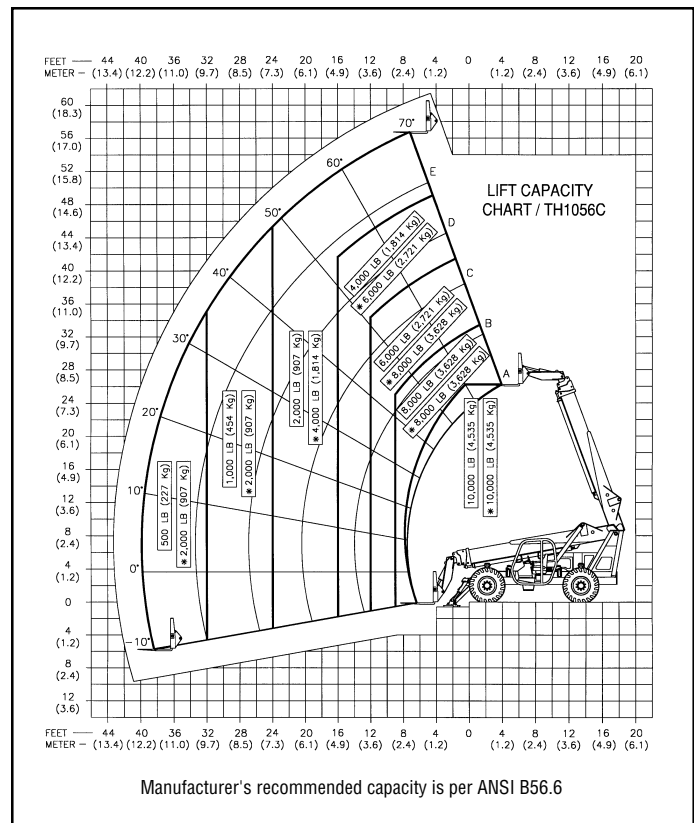
AUTOMATION	Type	Hydromechanical
	Operation	One Controller
	Fork Function	Self-leveling Throughout Lift/Lower Cycles and No Separate Slave Cylinder

FRAME STABILIZATION	Type	Rear Axle Lock-up
	Operation	Twin cylinders mounted between frame and axle actuated by stepping on service brake, shutting engine off, or 40° boom angle

STANDARD EQUIPMENT

Twin pivot mounted stabilizers and rear axle lock-up • Single controller for all boom and fork functions • Heavy duty 4 section boom • Self-leveling 48" (1.22 m) wide fork frame • 2-1/4" x 5" x 48" (5.7 cm x 12.7 cm x 1.22 m) forks • Motion control valves in the lift, fork tilt, extend, frame leveling and stabilizer circuits • Pilot operated on-demand

For more information, product demonstration, or details on lease and rental plans, please contact your local Terex Construction Distributor.



hydraulics • 10 micron pressure and return hydraulic filters • 125 HP John Deere Turbo-charged diesel engine • Dry type air cleaner • Dirt and water fuel filtration • 31-5 (1,000 CCA @ 0°F) battery • 95 AMP alternator • 3 speed Powershift transmission with a service brake and parking brake activated clutch cutoff • 2 heavy duty steering planetary axles • 4 wheel (2 wheel & oblique) power steering • 1400 x 24 12-ply tires • Spring applied/hydraulic release parking brake • Enclosed multiplate oil-cooled service brakes with accumulator backup • 10° either side of center frame leveling with indicator • Lockable fuel and hydraulic tank caps • Hourmeter • Removeable gauge panel • Gauges for: fuel level, transmission oil temperature, transmission clutch pressure, engine oil pressure, engine coolant temperature and electrical system voltage • Keyed start switch • Adjustable upholstered seat with seat belt • Back up alarm and rear view mirror • Hydraulic pressure connections are SAE O-ring or JIC • Pins are hardened and ground, bushings are of high compressive strength material, hardware is Grade 8 • Rear window • Front axle differential lock

OPTIONAL EQUIPMENT

Fully enclosed cab • Dual joystick controls • Heater • Defroster fan • Wiper • Turn signal & hazard flasher package • Cubing tines • Rubbish bucket (1 yard) • 60" and 72" (1.52 m and 1.83 m) pallet forks • 60" and 72" (1.52 m and 1.83 m) wide fork frame • Variable reach truss boom • Lights: Headlights, brake, tail, rear flood and strobe • Foam filled tires • Severe duty tires • Rotating fork frame 48", 60", and 72" (1.22 m, 1.52 m, and 1.83 m) • 45° Swing fork frame 60" and 72" (1.52 m and 1.83 m) • Quik-Switch Attachment • Auxiliary hydraulics • Suspension seat • Front window • Front screen • Right hand sliding glass • Ether aid • Cummins B3.9-C-130 turbo-charged diesel engine • Block heater

We reserve the right to amend these specifications at any time without notice. The only warranty applicable is our standard written warranty applicable to the particular product and sale. We make no other warranty, expressed or implied.



TEREX CONSTRUCTION AMERICAS

455 N. Superior Ave. • Baraga, MI 49908-0790 USA

906-353-6675 • Fax: 906-353-7543

E-mail: thsales2@up.net

www.terex.com